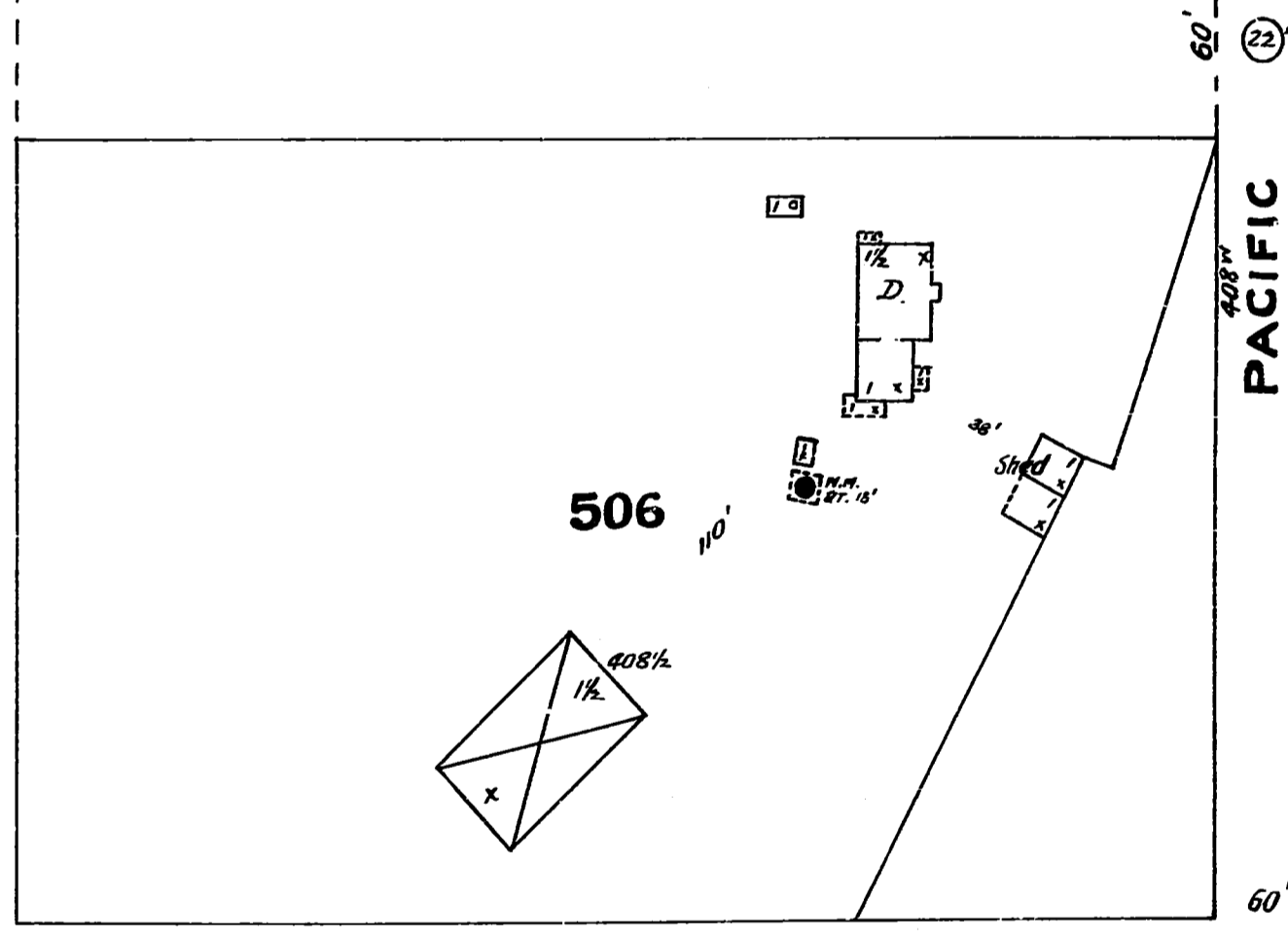
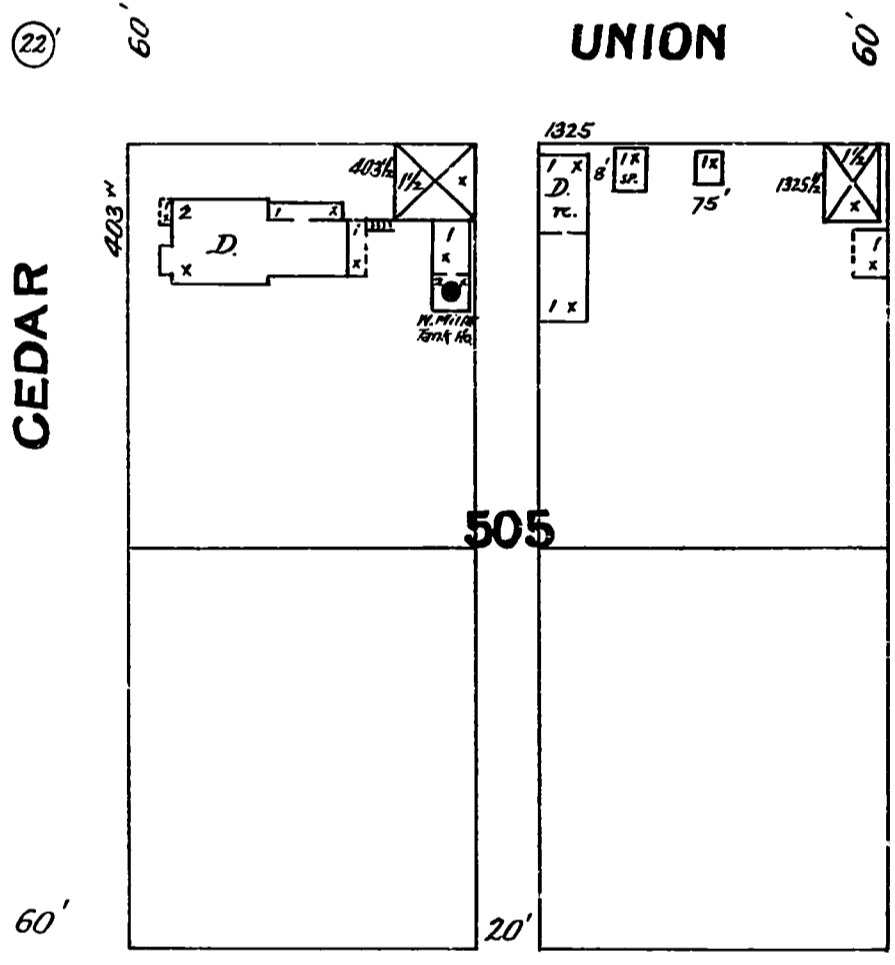
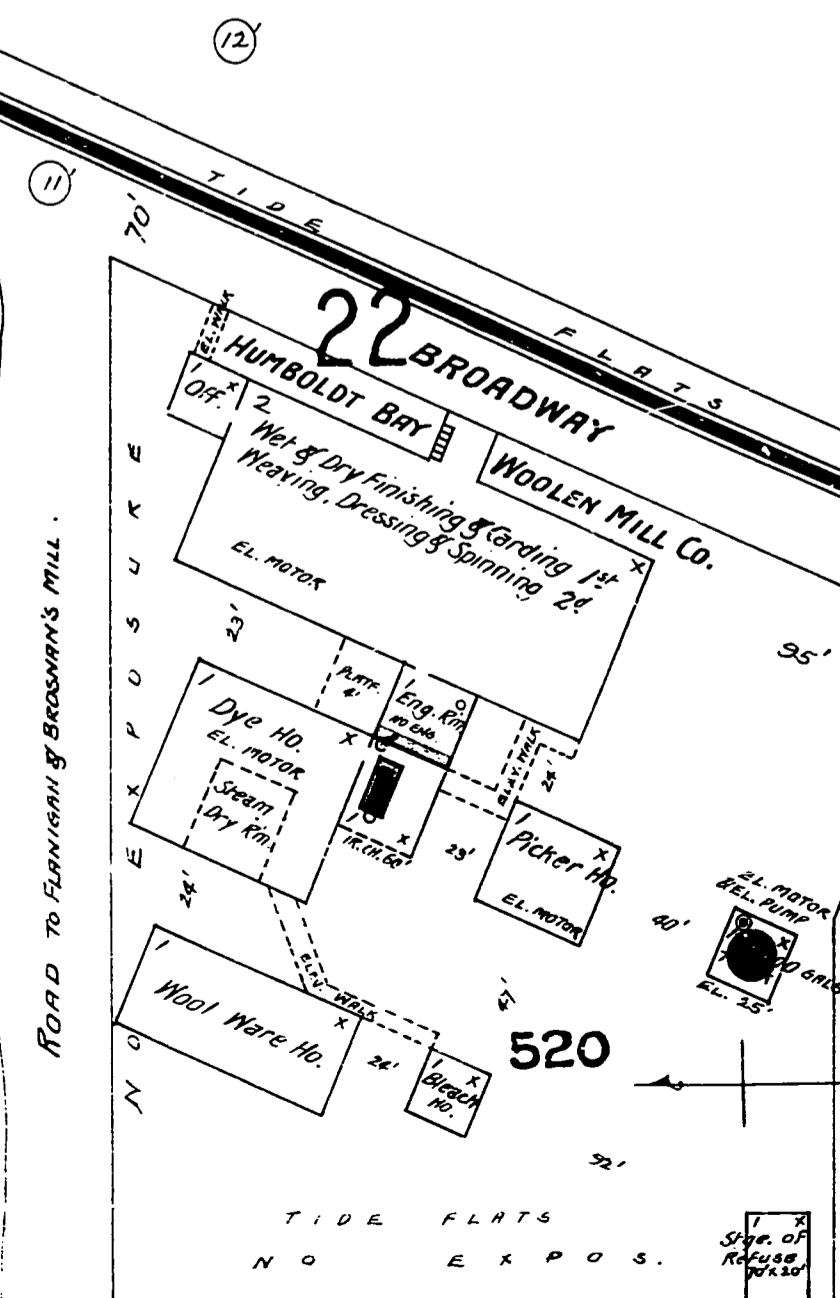
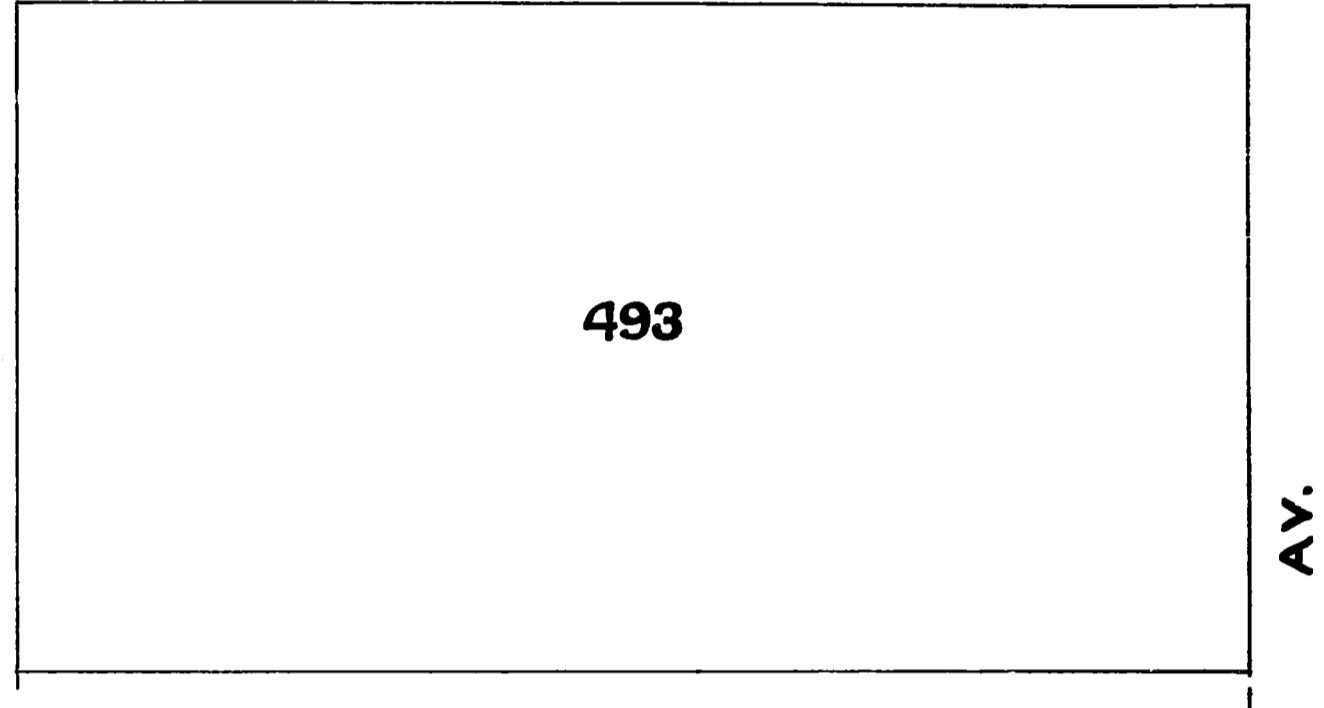
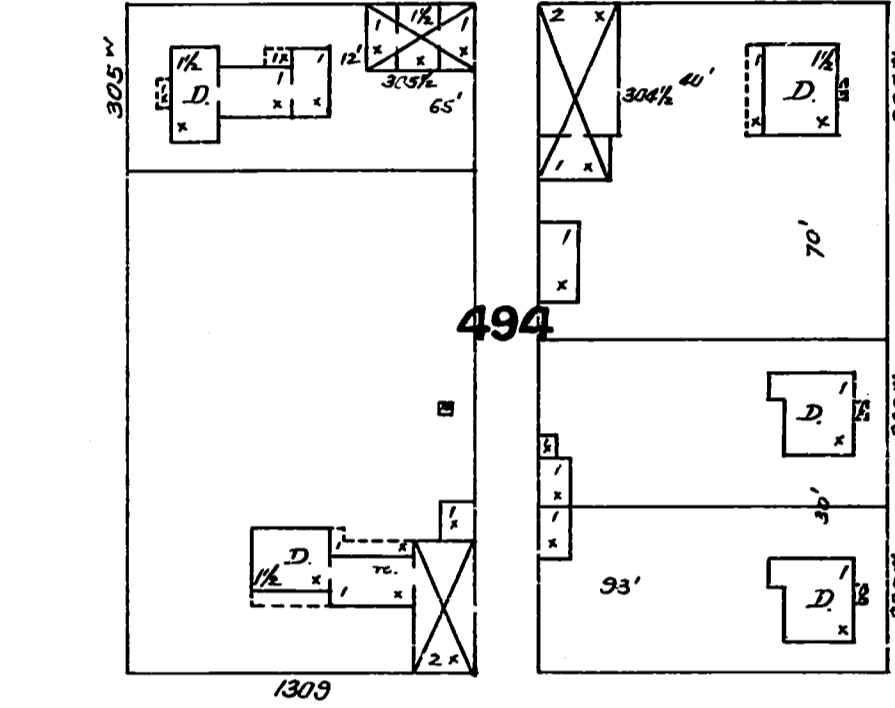
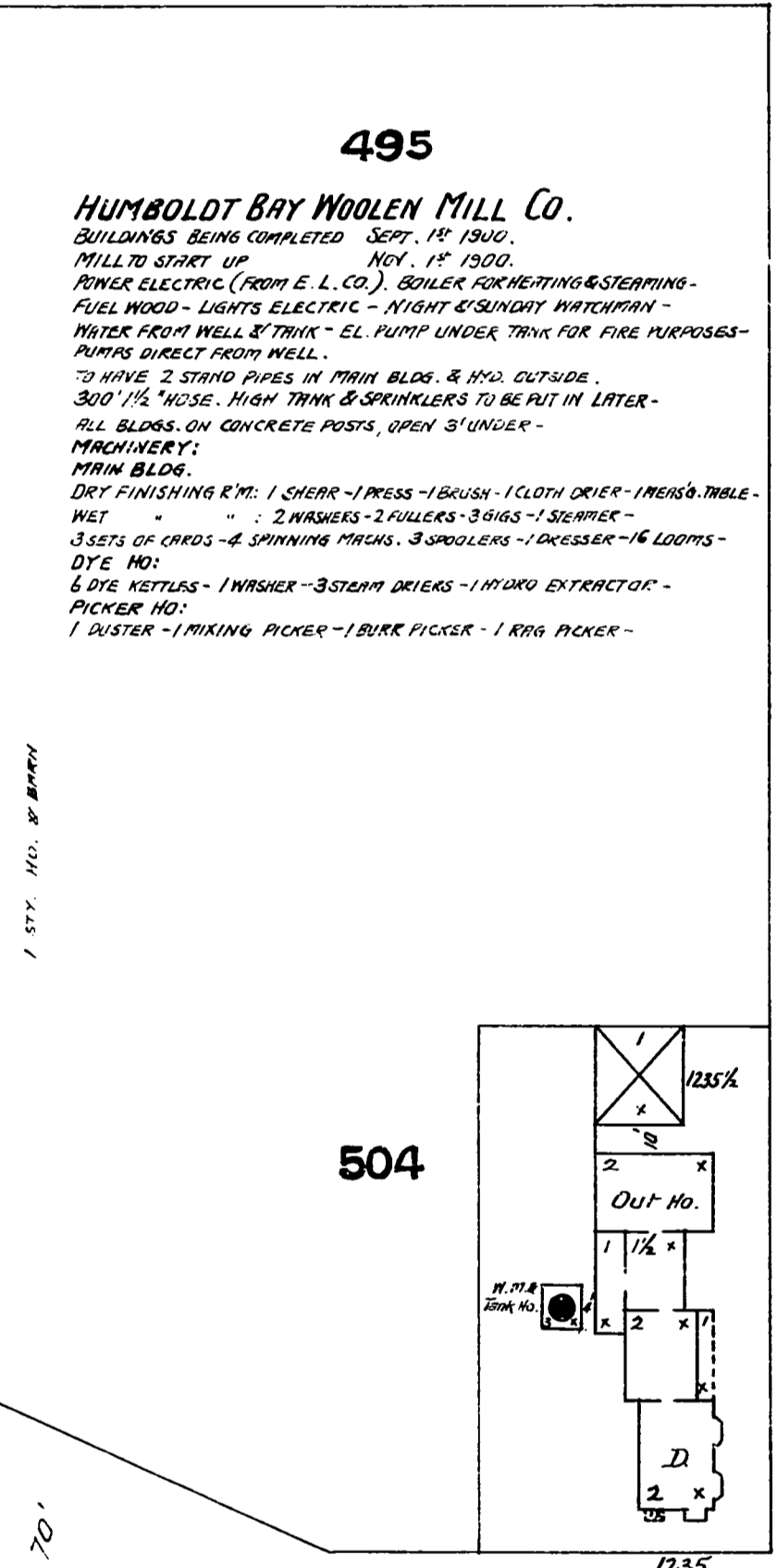


21 SIMPSON 60'

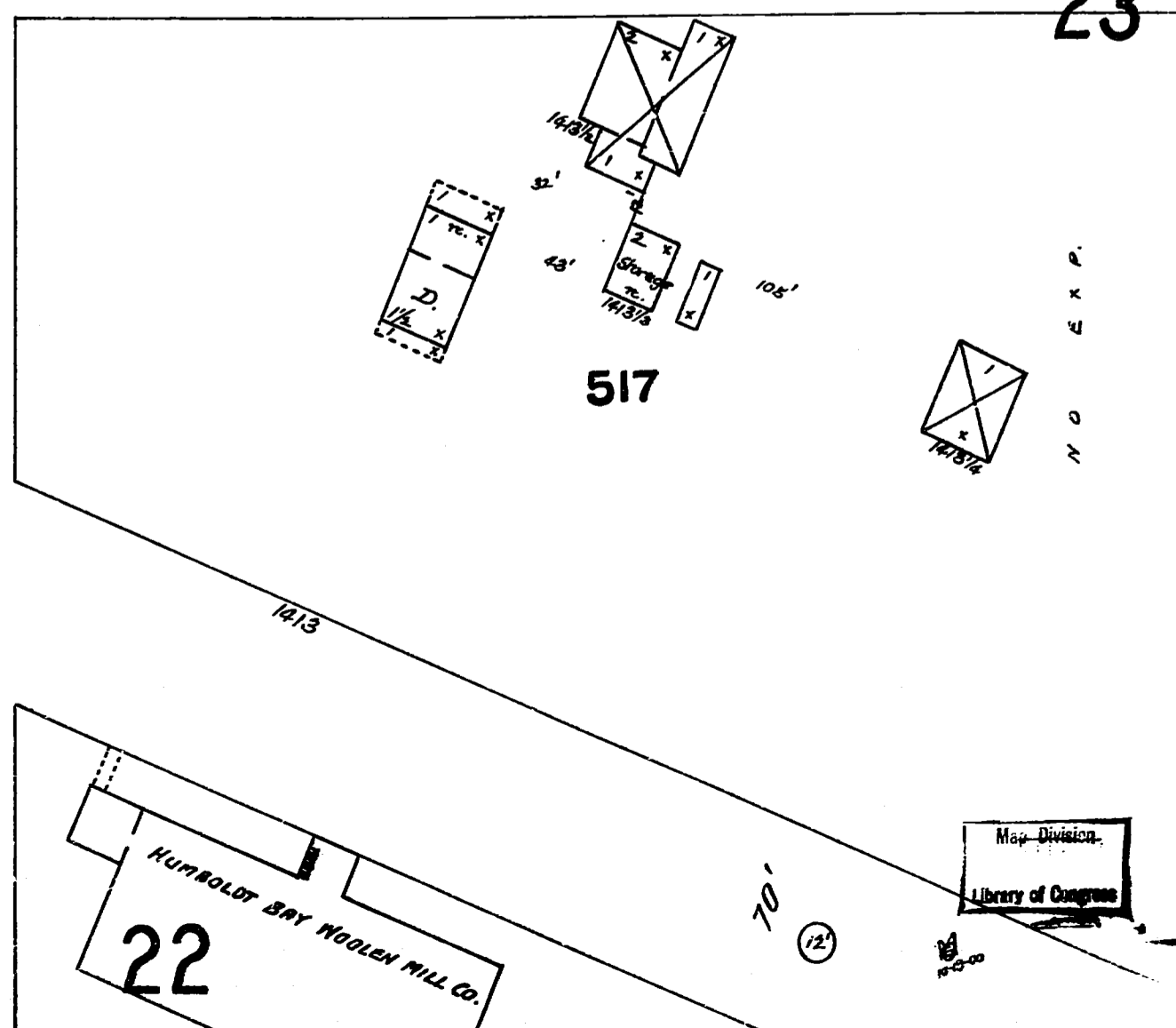
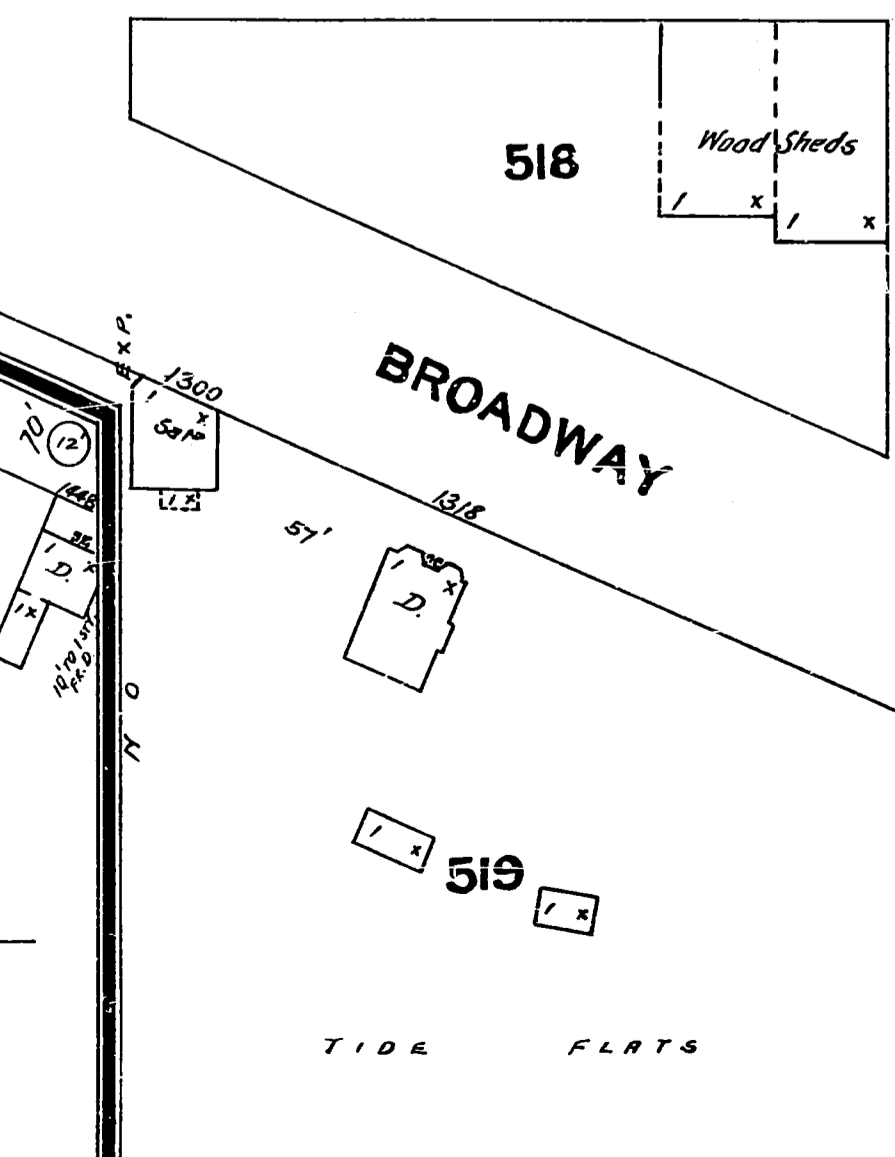
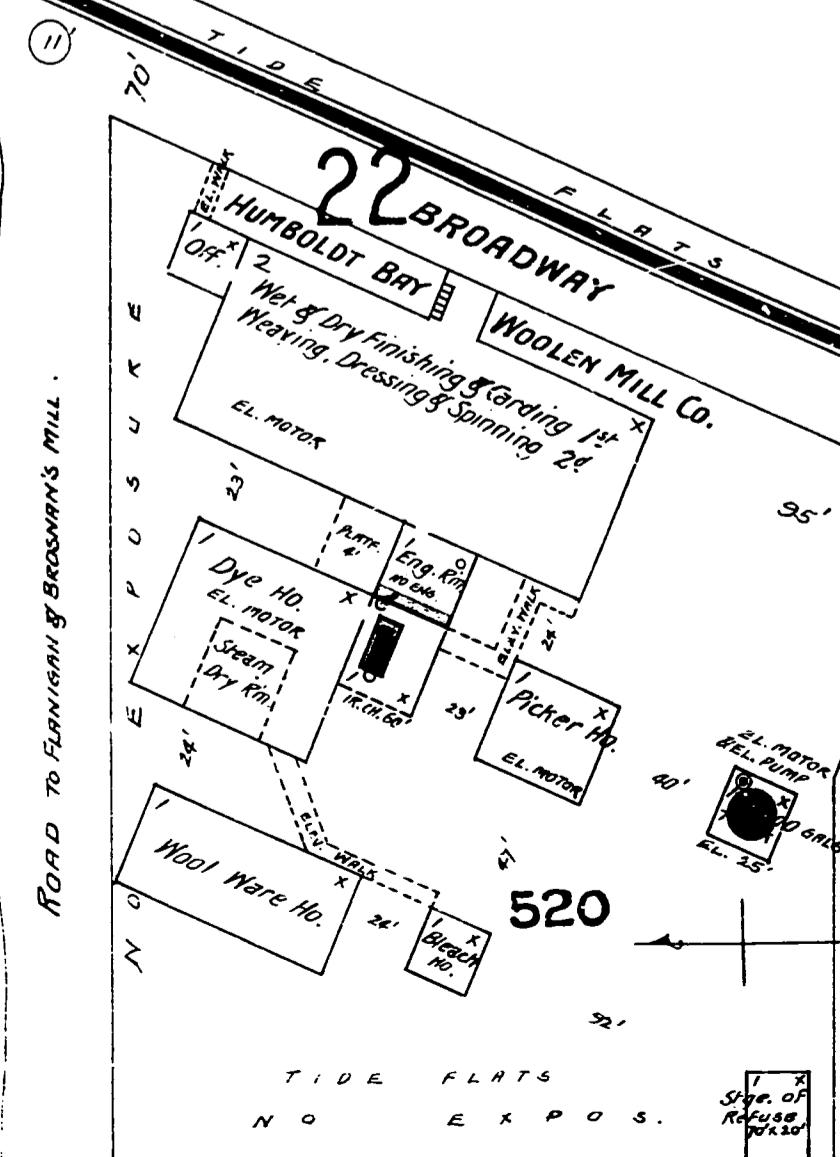
30' PINE 24 33' 60' 30' SUMMER 32'



12 70'

22 60' CEDAR 20' 60' UNION 60' 24'

22 60' WHIPPLE 23 60' 33'



11 70' TIDE FLATS NO EXPOS.

11 70' TIDE FLATS

11 70' TIDE FLATS

495
HUMBOLDT BAY WOOLEN MILL CO.
 BUILDINGS BEING COMPLETED SEPT. 14 1900.
 MILL TO START UP NOV. 14 1900.
 POWER ELECTRIC (FROM E. L. CO.), BOILER FOR HEATING & STEAMING -
 FUEL WOOD - LIGHTS ELECTRIC - NIGHT & SUNDAY WATCHMAN -
 WATER FROM WELL & TRINK - EL. PUMP UNDER TRINK FOR FIRE PURPOSES -
 PUMPS DIRECT FROM WELL.
 TO HAVE 2 STRAND PIPES IN MAIN BLDG. & 1/2" OUTSIDE.
 3/4" HOSE - HIGH TRINK & SPRINKLERS TO BE PUT IN LATER -
 ALL BLDGS. ON CONCRETE POSTS, OPEN 3" UNDER -
MACHINERY:
MAIN BLDG.
 DRY FINISHING R.M.: 1 SHEAR - 1 PRESS - 1 BRUSH - 1 CLOTH DRIER - 1 WEIS & TABLE -
 WET " " " 2 WASHERS - 2 FULLERS - 3 DIGES - 1 STEAMER -
 3 SETS OF CARDS - 4 SPINNING MACHS. 3 SPOOLERS - 1 DRESSER - 1/4 LOOMS -
 DYE HO:
 6 DYE KETTLES - 1 WASHER - 3 STEAM DRIERS - 1 HYDRO EXTRACTOR -
 PICKER HO:
 1 DUSTER - 1 MIXING PICKER - 1 BURR PICKER - 1 RAG PICKER -

